

OLYMPUS[®]

Your Vision, Our Future

Rhino-Laryngo Videoscope

NEW

OLYMPUS ENF TYPE VT2

Outstanding Observation Capability and Treatment Performance.

High quality imaging

Close focus for accuracy

2.0 mm channel for treatment

Multi-processor compatibility



*High-resolution
office therapy*

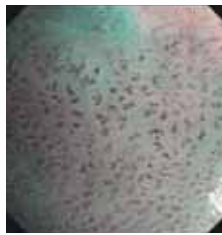
High Image Quality, Close Focus Observation. from Suction to Biopsy, a Wide Range of Treatments are Possible.

imaging



High quality images

The ENF TYPE VT2 delivers some of the brightest, clearest images in a videoscope, making observation less strenuous, facilitating a detailed image for diagnosis.



NBI

Observation with Narrow Band Imaging™ (NBI) is available when used with the EVIS EXERA II™ Universal Platform.



close focus



2.0 mm viewing distance

The close-focus feature permits close-up observation of the tissue as near as 2 mm, enabling better observation of the mucosa.

treatment



Targeted biopsy

Suction

The suction mechanism lets you keep a clear view with easy push-button switching.

Accessories

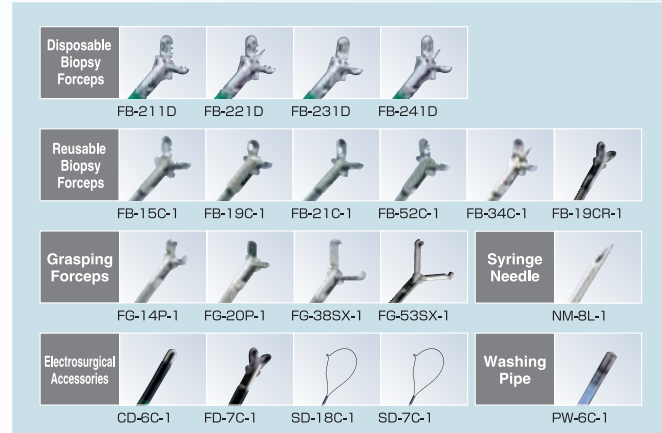
20 different types of accessories are available, giving you a wide range of instruments to choose from.

Laser

HF

Compatible with both laser/electrosurgery treatments.

Accessory Lineup



Specifications



- Optical system**
 - Field of View : 90°
 - Directions of view : 0° (Forward viewing)
 - Depth of field : 2-40 mm
- Insertion tube**
 - Distal end outer diameter : 4.8 mm
 - Flexible tube outer diameter : 4.9 mm
 - Working length : 365 mm
- Instrument channel**
 - Channel inner diameter : 2 mm
 - Minimum visible distance : 3 mm
- Bending section**
 - Angulation Range : Up 130° Down 130°
- Total length** : 635 mm
- NBI** : Available
- LD/YAG laser compatible / HF compatible**

Compatible Video Systems



EVIS EXERA II™ Universal Platform



VISERA Video System



OTV-SI Compact OFFICE Video System

Specifications, design and accessories are subject to change without any notice or obligation on the part of the manufacturer.



www.olympus.com

OLYMPUS MEDICAL SYSTEMS CORP.
Shinjuku Monolith, 3-1 Nishi-Shinjuku 2-chome, Shinjuku-ku, Tokyo 163-0914, Japan
OLYMPUS MEDICAL SYSTEMS EUROPA GMBH
Postfach 10 49 08, 20034 Hamburg / Wendenstrasse 14-18, 20097 Hamburg, Germany
OLYMPUS AMERICA INC.
3500 Corporate Parkway, P.O. Box 610, Center Valley, PA 18034-0610, U.S.A.
OLYMPUS SURGICAL & INDUSTRIAL AMERICA INC.
One Corporate Drive, Orangeburg, New York 10962, U.S.A.
OLYMPUS LATIN AMERICA, INC.
5301 Blue Lagoon Drive, Suite 290 Miami, Florida 33126-2097, U.S.A.
KEYMED LTD.
Keymed House, Stock Road, Southend-on-Sea, Essex SS2 5QH, England

OLYMPUS SINGAPORE PTE LTD.
491B River Valley Road #12-01/04 Valley Point Office Tower, Singapore 248373
OLYMPUS HONG KONG AND CHINA LIMITED
Room 1520-1527, Ocean Centre, 5 Canton Road, Tsimshatsui, Kowloon, Hong Kong
OLYMPUS (BEIJING) SALES & SERVICE CO., LTD.
Room 1202, NCI Tower, A12 Jianguomenwai Avenue Chaoyang District Beijing, 100022, China
OLYMPUS MOSCOW LIMITED LIABILITY COMPANY
117071, Moscow, Malaya Kaluzhskaya 19, bld. 1, 1L2, Russia
OLYMPUS AUSTRALIA PTY LTD
31 Gilby Road, Mount Waverley, VIC, 3149, Australia